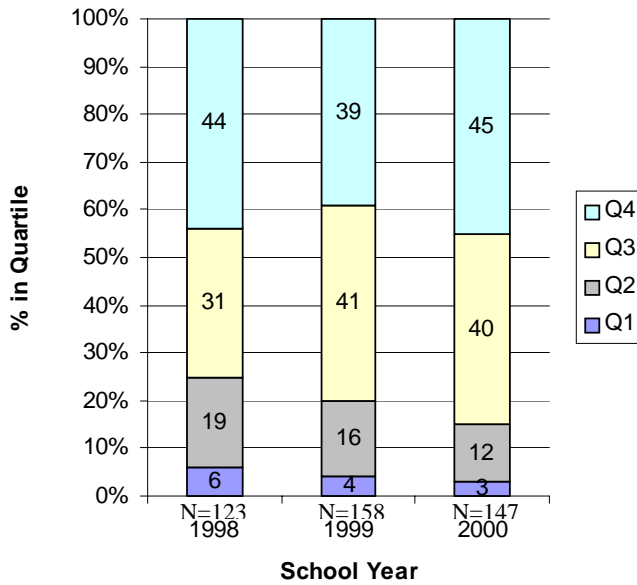


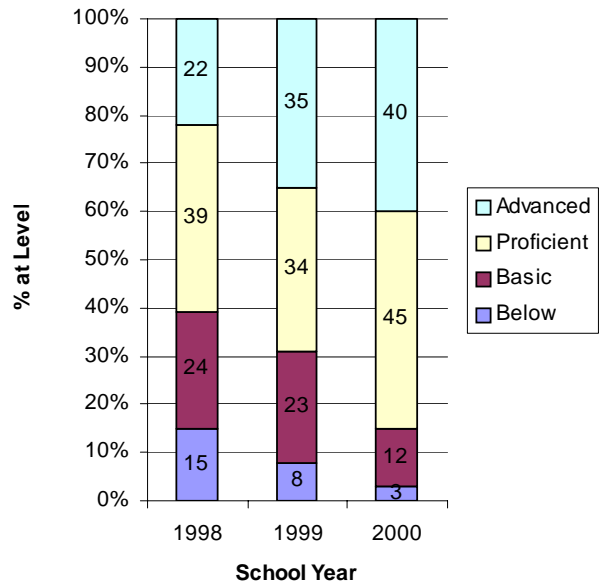
Data Display Examples

**Washington Elementary Stanford 9:
Math Scores (4th Grade)**



In the initial year, 75% of all Washington students scored in the upper two quartiles. In 1999, that number increased to 80%, though fewer were in the top quartile. By 2000, adjustments in instruction were made and 85% score in the upper quartiles.

**Washington Elementary State CRT
Math Grade 4**



In the first year, 61% of all Washington students scored in the upper two levels of attainment. In 1999, that number increased to 69%, though fewer were in the advanced level. By 2000, adjustments in instruction were made and 85% score in the upper levels.

**Washington Professional
Development**

